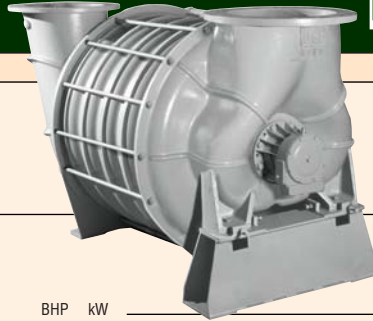


# Model 246

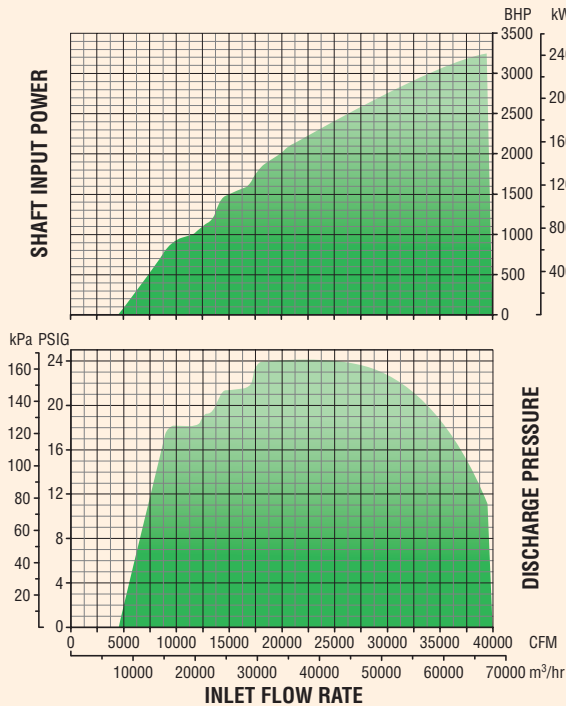
**HSI** MULTISTAGE CENTRIFUGAL BLOWERS



## General Performance

## Specifications Standard

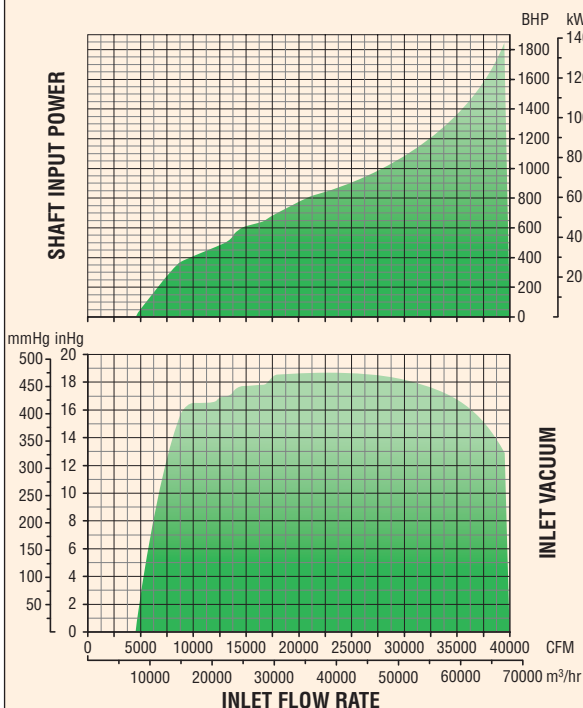
### MODEL 246 BLOWER



### TECHNICAL DATA

Number of Stages .....	1 through 6
Inlet Connection .....	30" (304.8 mm) flange, ASA 125# / ANSI 150# drilling
Outlet Connection .....	24" (304.8 mm) flange, ASA 125# / ANSI 150# drilling
Operating Speed.....	3550 RPM (60 Hz), 2960 RPM (50 Hz)
Casing Pressure .....	25 PSIG (1.76 kg/cm <sup>2</sup> )
Seals (air).....	Labyrinth type
Seals (gas).....	Carbon ring type (four each end)/custom available
Bearings.....	Ball, 10-year minimum life per AFBMA L <sub>10</sub> standard
Lubrication .....	Oil
Impeller Diameter.....	37.00 in (939.8 mm)
Impeller Tip Speed .....	576 ft/s (176 m/s) @ 3550 RPM
First Critical Speed .....	4356 RPM (6-stage)
Drive Type .....	Direct coupled, Inlet driven (standard) or Outlet driven
Shaft End .....	2.625 in (92 mm) diameter at coupling
Vibration Tolerance .....	.25 in/s (6.4 mm/s) ISO overall specification, 1.25 mils (0.03 mm) peak to peak
Rotor Balance.....	Military standard 167-1. Individual impellers and rotating assembly dynamically balanced

### MODEL 246 EXHAUSTER



### MATERIALS OF CONSTRUCTION

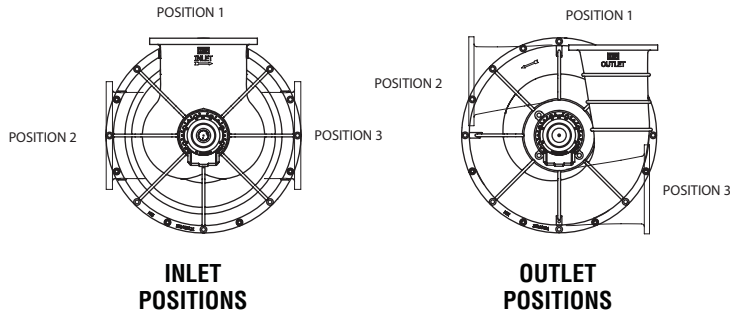
Casing .....	Cast iron ASTM A48 grade 25/30
Bearing Caps & Housings ...	Cast iron ASTM A48 grade 25/30
Oil Reservoir .....	Cast iron ASTM A48 grade 25/30
Shaft .....	Carbon steel AISI 4140 (stainless steel available)
Impellers .....	Cast aluminum ANSI AA319/356 or fabricated aluminum ANSI AA6061 with cast Al AA356 hub stainless steel/custom alloys available
Seals (air).....	Cast aluminum ANSI AA356/319
Seals (gas).....	Isostatically molded, high density, fine grain electro-graphite
Interstage Baffle Rings .....	Stainless steel ASTM A240 304
Tie Rods .....	.75 in (19.1 mm) diameter, high strength steel ASTM A193-B7/B7M available
Blower Base .....	Welded structural steel ASTM A36 ASME/AWS D1.1 WPS's available
Motor Pedestal.....	Welded steel plate ASTM A36
Joint Sealing Compound .....	RTV silicone
Base Isolation Pads.....	Neoprene rubber
Finish .....	HSI standard

Curves are based on atmospheric conditions of 1 Atm, 68F/20C, 36% RH, and 3550 rpm

# MODEL 246 MULTISTAGE CENTRIFUGAL BLOWER

## Inlet and Outlet Orientation Options

The orientation of the inlet and outlet is selectable from any of three different positions, as viewed when facing the exterior of the part:



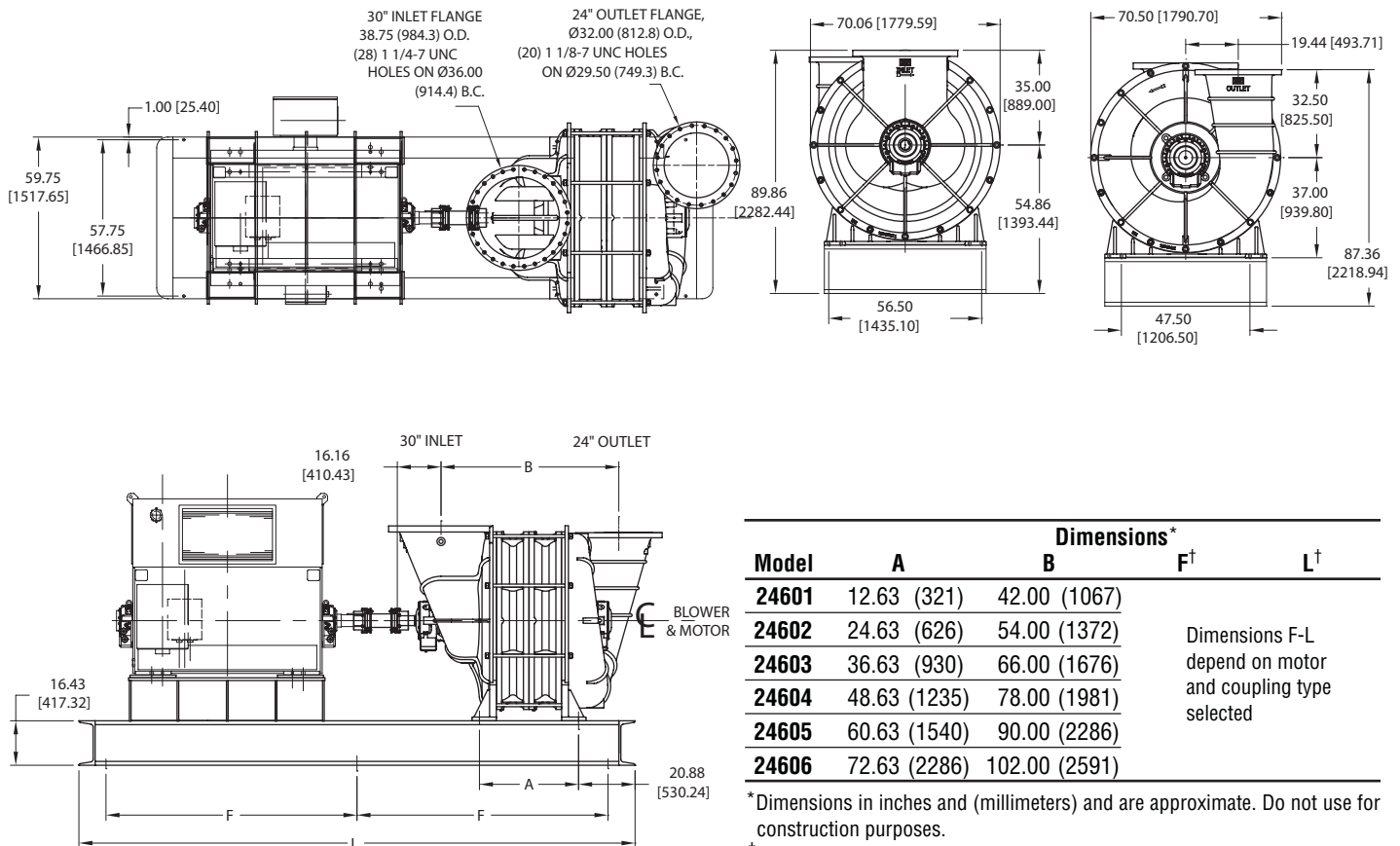
\*Standard configuration.

## Weight and Inertia

Model	Weight*		Wk <sup>2</sup>	
	lb	kg	lb-ft <sup>2</sup>	kg-m <sup>2</sup>
24601	6,288	2,852	161	6.79
24602	9,014	4,089	255	10.73
24603	11,740	5,325	348	14.68
24604	14,466	6,562	442	18.63
24605	17,192	7,798	536	22.58
24606	19,918	9,035	629	26.53

\*Approximate weight for blower only.

## General Arrangement



**HSI, Inc.**  
 7901 Hansen Rd., Houston, Texas 77061  
 713-947-1623  
 800-725-2291  
 Fax: 713-947-6409  
 www.hsiblowers.com  
 hsi@hsiblowers.com

